



PROJEX PARTNERS

CAPABILITY STATEMENT

Urban Development

ProjexPartners

PROJECT MANAGEMENT | ENGINEERING | PLANNING

Building community through our people





WHO WE ARE



Projex Partners provides project management, civil and structural engineering and planning services throughout Australia, with offices on the Sunshine Coast, Brisbane, Gold Coast and Cairns.

Quality assured and client focused services are delivered by our committed team of professional engineers, project managers, technical and administrative personnel.

We seek to build long lasting relationships with our clients and the community through understanding and meeting our client's needs.

We provide services to all levels of government and the private sector across Australia.



WHAT WE DO

Projex Partners offers consulting engineering services in:

- Urban Development Planning and Design
- Municipal Engineering
- Project Management
- Hydrology and Drainage Planning and Design
- Water Reticulation and Sewer Planning and Design
- Environment
- Coastal Engineering
- Resources
- Town Planning
- Road and Highways Planning and Design
- Traffic and Transportation
- Parks and Sporting Facilities
- Sustainable Transport
- Peer Reviews
- Waste

Projex Partners prides itself in delivering more than you expect with our client focused service excellence. We endeavour to understand our clients' needs and will work closely with you to deliver a solution that strives for an efficient, cost-effective outcome. We operate under a third-party accredited Quality Assurance System that satisfies the requirements of ISO 9001:2015. This certification demonstrates our strong commitment to providing a quality service to our clients.





OUR TEAM

Projex Partners team are a group of passionate and experienced engineers, drafters and project managers. We promote a value added, best for project design approach with a focus on achieving client driven project outcomes.

We differentiate ourselves through building long lasting relationships with our clients to become their trusted advisor for engineering services and solutions.



Huon Aquaculture's Whale Point



North Queensland Stadium



SCAEP 22ML Tank



Newstead Series, Newstead



Paynters Creek Road,
Rosemount



Griffith University Aquatic Centre



URBAN DEVELOPMENT

PLANNING AND DESIGN

Projex Partners offers consulting engineering services in:

- Residential Subdivisions and Unit Developments
- Industrial Subdivisions and Warehouses
- Shopping Centres and Commercial Buildings
- Schools, Child Care Centres and Community Centres
- Active Transport Networks and Infrastructure
- Retirement Villages
- Parks and Sporting Facilities
- Services planning and design
- Telecommunications and electrical coordination

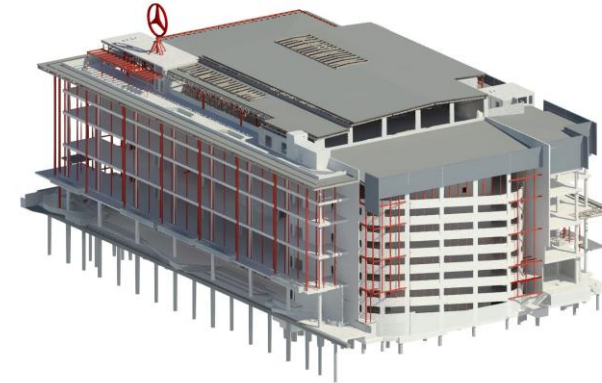
PROJECT EXPERIENCE



The spiral ramp at the rear of the building was designed with all vertical and horizontal elements as precast to simplify erection and suit the construction program.



The project includes new car showrooms, sales and service areas, museum and other commercial tenancies over five levels adjacent to Breakfast Creek in Newstead. Projex Partners provided full structural design services including structural steelwork, precast, pre-tensioned, post-tensioned and conventional reinforced concrete elements.



**Mercedes Benz
Autohaus, Newstead**

John Holland Group



The building is equivalent to 10 storeys in height and is approximately 100m by 60m wide. Projex Partners began work with the successful building contractor pre-tender to develop an efficient structural system which consisted of CFA piles, precast beam shells with metal deck slabs and precast core walls.

PROJECT EXPERIENCE



Design of Stages 1 and 2 of the \$95 million Newstead Series residential project. The development includes 300 apartments and townhomes spread across four boutique towers – The Carlyle, The Donaldson, The Ajax and The Koerstz. A shared podium provides half an acre of subtropical landscaped gardens and amenities including a 25 metre lap pool and spa, sauna, gymnasium with green room, alfresco dining areas, fire pit, outdoor cinema, recreational lawns and exercise spaces. Masonry screen elements provide a notable feature on the street elevations. Projex Partners also provided construction support in relation to tower cranes and material hosts for the project.



Newstead Series Apartments
Watpac Constructions

Skyring Apartments, Newstead
Tom Dooley Developments



Design of a 25-storey unit building over three basements. The project utilises a diaphragm wall for retention in poor ground conditions, with reinforced concrete slabs, reinforced and post-tensioned transfer elements, and a majority of precast vertical load bearing elements. Services included design of tower crane footings and staging.

PROJECT EXPERIENCE



**32 Myla Road,
Landsborough**

Silk Properties



Detailed design for a 20 lot residential subdivision including earthworks, stormwater drainage and water and sewer reticulation. Prepare and lodge Operational Works application, Connection application and private works application. Provide Construction certification and arrange final inspection and certificate of completion.

**Bribie Island
Recreation Reserve
Netball Courts**

*Moreton Bay Regional
Council*



Engineering services for the reconstruction of three existing lit netball courts, construction of a new clubhouse, construction of compliant pathways, construction of a rebound training wall and a construction of a boundary fence. The project included geotechnical design, services design and lighting design.

PROJECT EXPERIENCE



Projex Partners was engaged by Morayfield Property Developments for the design and documentation of operational works plans associated with the 116 residential unit development at Caboolture River Road.

The operational works application included stormwater design, earthworks, Stormwater Management Plan, water and sewer connections, application to Council/Unity Water and external channelised urban intersection design.



Caboolture River Road Residential Unit Development

Morayfield Property Developments



Fitzroy Boat Ramps

Department of Transport and Main Roads



Detailed design works and TIC tender preparation and Contract Administration Services for the following four Boat Ramp projects in Fitzroy District:

- Ski Gardens
- Mulambin
- Glebe Weir
- Callaghan Park, Rockhampton
- Stanage Bay.

A key outcome is the integration of Rockhampton Regional Council works into the contract for delivery at Callaghan Park and includes a new significant carpark and a fishing platform.

PROJECT EXPERIENCE



Samford Road Ferny Hills Cycle and Pedestrian pathway bridge

*Moreton Bay
Regional Council*



Structural design and documentation of the Samford Road Ferny Hills Cycle and Pedestrian pathway bridge. The design required a 100m long suspended pathway for cyclists and pedestrians constructed over an existing embankment. Foundations comprised 2.8m deep reinforced concrete bored piers supporting steel posts under cantilevered steel floor beams which in turn support the boardwalk/deck over.

Griffith University Aquatic Centre

Watpac



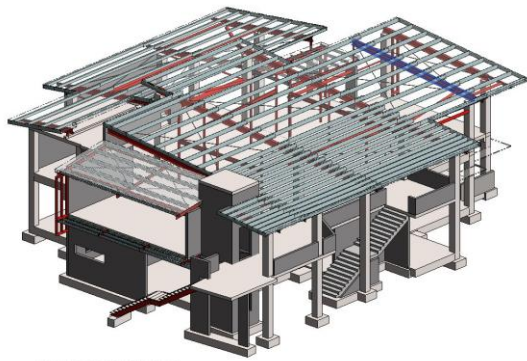
The project included an Olympic swimming pool with associated service spaces, a gym and external terraced seating and landscape areas. Whilst the structure comprises a combination of reinforced concrete block walls and precast walls panels supporting suspended concrete slabs, public spaces feature high quality coloured insitu concrete surface finishes. Large open spaces are created for the gym and exercise space. The building won 'Building of the Year (Gold Coast Region)' from the Australia Institute of Architects in 2018.

PROJECT EXPERIENCE

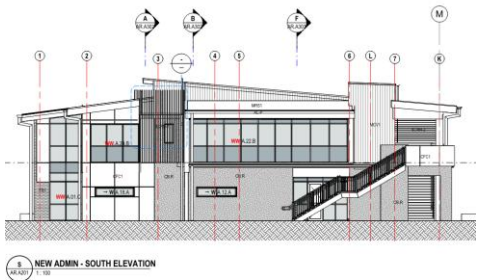


Pacific Lutheran College – Stage 9, Administration Building

Pacific Lutheran College



ADMINISTRATION BUILDING



The main structure comprises a 2 storey Administration Building, built upon a 'P' (problem site) category foundation. Reinforced slabs on ground, a suspended concrete first floor slab and reinforced concrete columns' frame the main structure. Very few loadbearing blockwork internal walls ensured a spacious versatile floor layout. The multi-faceted skillion roofs are of structural steelwork construction.

Eversleigh Road, Scarborough - Embankment Stabilisation

Moreton Bay Regional Council



Projex Partners was engaged by Moreton Bay Regional Council to undertake a site investigation, geotechnical investigation and slope stability assessment of the existing embankment for the removal of a large tree at the eastern end of Eversleigh Road, Scarborough.

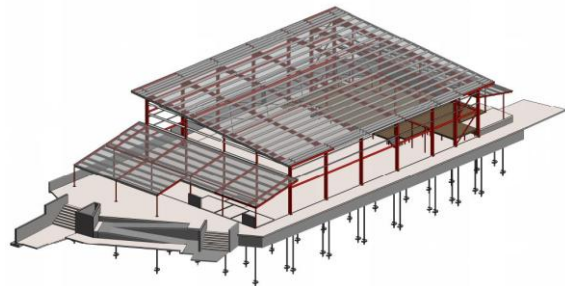
Projex Partners worked with Council to solve the slope stability issues and improve the usability of the site through the construction of a retaining wall and landscaping.

PROJECT EXPERIENCE



Rosedale South State School Multi-Purpose Hall

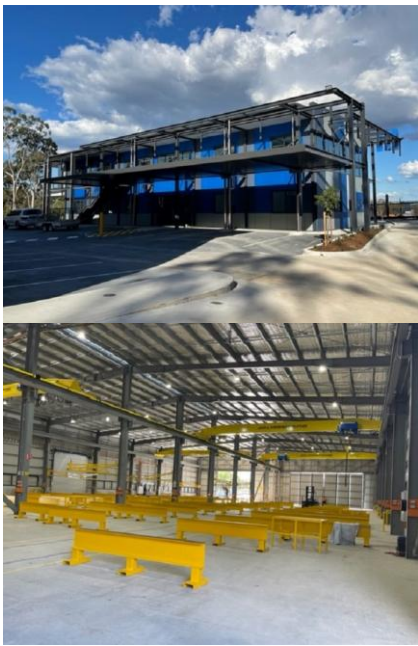
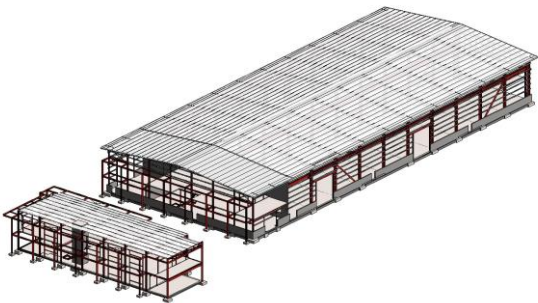
Watpac Construction



Engaged by Watpac to complete the structural and civil design aspects of the Performing Arts Centre Hall, Projex Partners worked collaboratively with the consultant team to investigate various framing options resulting in the 22m single span, mono-slope, portal frame structure. The foundation system consists of a suspended concrete slab supported on screw piles at regular centers, cast over a void former to combat the challenging ground conditions.

Beenleigh Steel Fabrication Factory, Berrinba

Beenleigh Steel Fabrications



Projex Partners' long term client Beenleigh Steel Fabrications engaged us to work closely with their architect to design the purpose built, state of the art steel fabrication factory. The main warehouse with separate office building has been designed to express the clients core business of steel fabrication and has been achieved through exposed external steel framing, raking ceilings with exposed trusses and hanging high bay lights with exposed AC feature ductwork all to keep the industrial aesthetic. Four gantry cranes (10T/20T) including a twenty tonne dolly on rails cast into the warehouse slab ensure the facility is future proofed and fit for operational purposes. Projex Partners was extremely pleased to have completed the structural and civil engineering design for the project.



Ciel Apartments, New Farm



Quarry Road, Sherwood



Skyring Apartments, Newstead

CONTACT DETAILS



Daniel Berry

Managing Director / Climate Resilience
Lead / Principal Engineer
1300 789 214
0400 604 556
danielberry@projexpartners.com.au

Mark Atkinson

Principal Municipal Engineer
1300 789 214
0409 732 787
markatkinson@projexpartners.com.au

Jeffrey Roulston

Director / Principal Structural Engineer
1300 789 214
0413 704 772
jeffreyloulston@projexpartners.com.au

Kai Pelgrave

Principal Designer
1300 789 214
0411 457 252
kaipelgrave@projexpartners.com.au

Maroochydore

Level 1, 135 Horton Parade
Maroochydore
PO Box 219, Maroochydore QLD 4558

Cairns

14 Spence Street
Cairns
PO Box 5419, Cairns QLD 4870

Brisbane

Suite 2, Level 1
67 St Pauls Terrace
Spring Hill QLD 4000

Gold Coast

Tenancy D
Level 2, 17 Short Street
Nerang QLD 4215