



PROJEX PARTNERS

CAPABILITY STATEMENT

Structures

ProjexPartners

PROJECT MANAGEMENT | ENGINEERING | PLANNING

Building community through our people





Aqua Apartments, Newstead

WHO WE ARE



Projex Partners provides project management, civil and structural engineering and planning services throughout Australia, with offices on the Sunshine Coast, Brisbane, Gold Coast and Cairns.

Quality assured and client focused services are delivered by our committed team of professional engineers, project managers, technical and administrative personnel.

We seek to build long lasting relationships with our clients and the community through understanding and meeting our client's needs.

We provide services to all levels of government and the private sector across Australia.



WHAT WE DO

Projex Partners offers structural engineering and construction supervision services in:

- Multi-Residential Buildings
- Medium and High Rise Buildings
- Commercial and Industrial Buildings
- Community Infrastructure
- Construction Engineering
- Emergency Response Assistance
- Dilapidation Surveys
- Peer Reviews and Independent Verification
- Education and University Facilities
- Health and Aged Care Facilities
- Building Refurbishments and Fitouts

Projex Partners prides itself in delivering more than you expect with our client focused service excellence. We endeavour to understand our clients' needs and will work closely with you to deliver a solution that strives for an efficient, cost-effective outcome. We operate under a third-party accredited Quality Assurance System that satisfies the requirements of ISO9001:2015. This certification demonstrates our strong commitment to providing a quality service to our clients.





OUR TEAM

Projex Partners team are a group of passionate and experienced engineers, drafters and project managers. We promote a value added, best for project design approach with a focus on achieving client driven project outcomes.

We differentiate ourselves through building long lasting relationships with our clients to become their trusted advisor for engineering services and solutions.



Huon Aquaculture's Whale Point



North Queensland Stadium



SCAEP 22ML Tank



PEER REVIEWS



Independent, technical peer reviews of project designs by qualified, competent structural engineers can help to reduce project risk and cost. This can be achieved through:

- identifying potential oversights in the design and detailing
- highlighting design elements that dictate construction programming and pour sequencing
- analysing the efficiency of the materials, structural system and quantities based on our experience and independent review/analysis
- identifying temporary works required and reducing or removing the impact to the project timeline

Our highly regarded team draw on over 110 years of combined project and engineering experience in the following engineering sectors:

- high rise commercial buildings
- multistorey apartments and boutique unit developments
- aged care, education and health sectors
- sports stadiums
- mining, energy and resources
- commercial and retail sectors
- heavy and light industrial sectors

Our team will quickly and effectively complete peer reviews and communicate to you findings that will contribute to reducing project risk and project costs.

Depending on the type, size and public profile of the project we can offer guidance on potential risks and recommended level of peer review.

We deliver a service that will provide independent, expert advice as a trusted partner in delivering your project.

We respect and strive to uphold the integrity of the structural engineering community.

Our goal is to provide reassurance and confidence to your project structural engineering designs and provide an additional level of comfort.

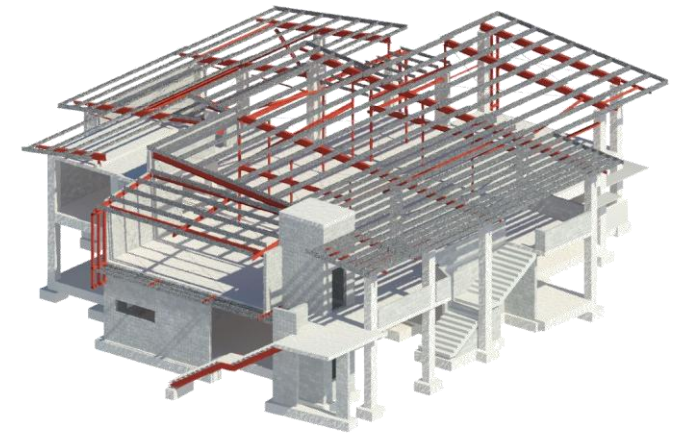


STRUCTURAL MODELLING CAPABILITY

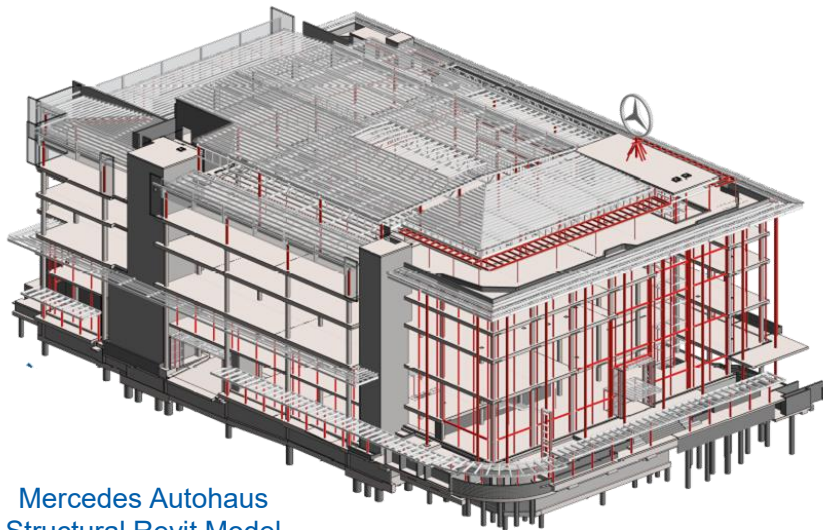
Projex Partners uses Autodesk BIM tools for authoring and collaboration, and embraces openBIM. Our experienced team produces high quality models and can accommodate your specific project requirements.



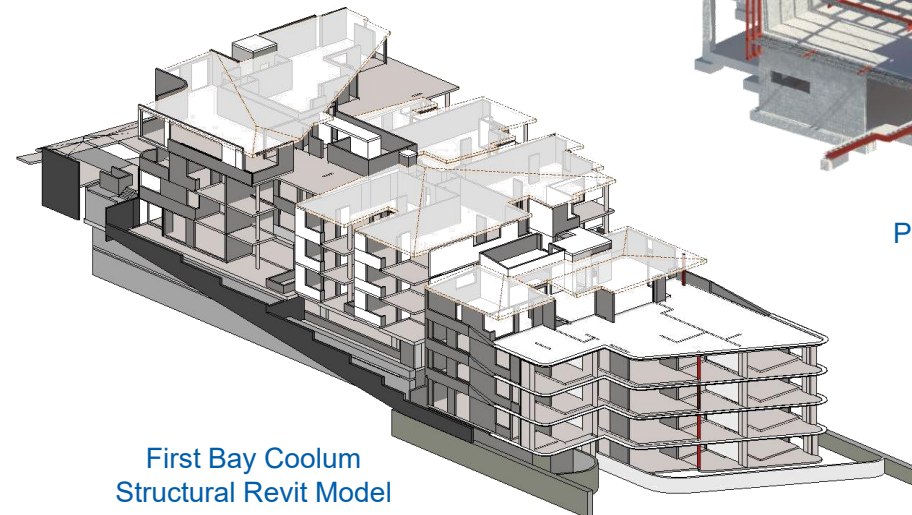
Market Lane Residences
Structural Revit Model



Pacific Lutheran College – Stage 9
Structural Revit Model



Mercedes Autohaus
Structural Revit Model



First Bay Coolum
Structural Revit Model

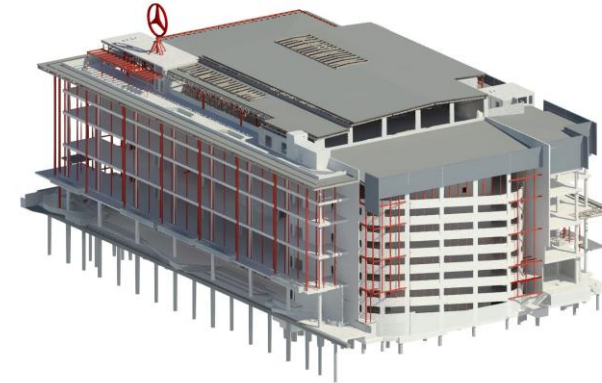
PROJECT EXPERIENCE



The spiral ramp at the rear of the building was designed with all vertical and horizontal elements as precast to simplify erection and suit the construction program.



The project includes new car showrooms, sales and service areas, museum and other commercial tenancies over five levels adjacent to Breakfast Creek in Newstead. Projex Partners provided full structural design services including structural steelwork, precast, pre-tensioned, post-tensioned and conventional reinforced concrete elements.



**Mercedes Benz
Autohaus, Newstead**

John Holland Group



The building is equivalent to 10 storeys in height and is approximately 100m by 60m wide. Projex Partners began work with the successful building contractor pre-tender to develop an efficient structural system which consisted of CFA piles, precast beam shells with metal deck slabs and precast core walls.

PROJECT EXPERIENCE



Structural design for a 16 storey mixed use development over 4 basements bounded by existing buildings and heritage structures in difficult ground conditions.

Photos by Stefan Jannides Photography



Gasworks Residences, New Farm

Tom Dooley Developments



Projex Partners worked closely with the piling contractor to develop a strutted diaphragm wall retention system which enabled the basement excavation to occur without damage to adjacent structures.

PROJECT EXPERIENCE



Market Lane Residences, Maroochydore CBD

*Habitat Development
Group*



Projex Partners were engaged for the Structural and Project Coordination components of this unique and landmark second project to be undertaken in the new Maroochydore City Centre. Market Lane is part of a two tower project, with 65 apartments in Tower 1 and 81 apartments in Tower 2 across 12 & 14 levels respectively. A retail precinct will be on the ground level plus six small office / home office Terraces.

Argyle - 44 Maxwell Street, New Farm

*Tom Dooley
Developments*



Projex Partners undertook the detailed design of the 5 storey premium apartments over 3 basements adjacent to the Brisbane River.

The project consisted of two discrete construction stages designed to allow for the retention of a refurbished three storey heritage house to be resituated upon a landscaped podium beside the new apartment building. The project incorporates post-tensioned floor slabs, multiple transfer slabs, and precast walls with varying finishes.

Photos by Stefan Jannides Photography

PROJECT EXPERIENCE



Design of the \$95 million Newstead Series residential project. The development includes 300 apartments and townhomes spread across four boutique towers. A shared podium provides half an acre of subtropical landscaped gardens and amenities.

Floating masonry screen elements provide a notable feature on the street elevations.

Projex Partners provided construction support in relation to tower cranes and material hoists for the project.



Newstead Series Apartments
Watpac Construction

Skyring Apartments, Newstead
Tom Dooley Developments



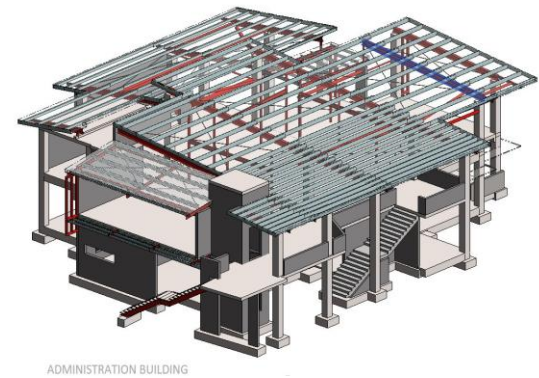
Design of a 25-storey unit building over three basements. The project utilises a diaphragm wall for retention in poor ground conditions, with reinforced concrete slabs, reinforced and post-tensioned transfer elements, and a majority of precast vertical load bearing elements.

PROJECT EXPERIENCE

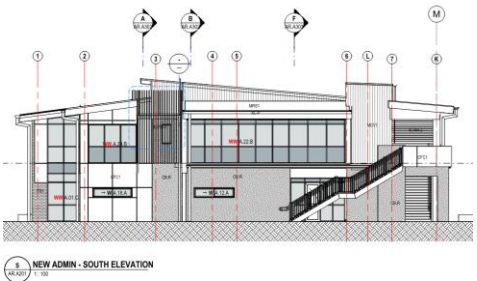


Pacific Lutheran College – Stage 9

Pacific Lutheran College



ADMINISTRATION BUILDING



The main structure comprises a 2 storey Administration Building. Reinforced slabs on ground, a suspended concrete first floor slab and reinforced concrete columns frame the main structure. Very few loadbearing blockwork internal walls ensured a spacious versatile floor layout. The multi-faceted skillion roofs are of structural steelwork construction.

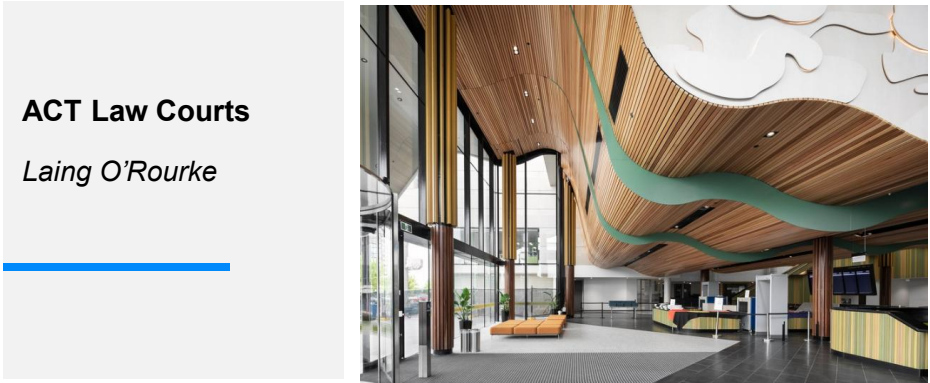
Aquila Apartments, New Farm

Tom Dooley Developments



Design of all elements of 10-storey and 4-storey unit buildings utilising insitu reinforced and pre-stressed slabs, precast walls, steel roof framing and tower crane base.

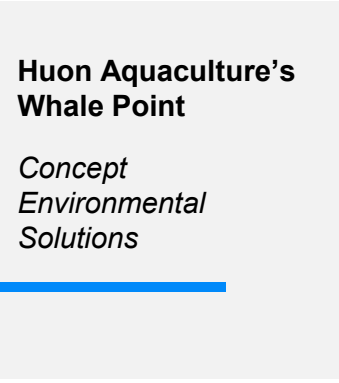
PROJECT EXPERIENCE



ACT Law Courts
Laing O'Rourke



Design of precast vertical and horizontal structural elements, façade cladding panels and temporary works for erection of a four storey fully precast framed building with high floor to floor heights. This involved close liaison with the precast manufacturer and rigger to satisfactorily overcome transport, handling and site logistical constraints.



**Huon Aquaculture's
Whale Point**
*Concept
Environmental
Solutions*



Structural design services for the modular tank system used for the 20 tanks at this project. The project came into service just after Huon Aquaculture Co-Founders, Peter and Frances Bender were jointly recognised as the 2018 Australian Farmer of the Year.

This is the first Australian land-based salmon farm.



Ciel Apartments, New Farm



Quarry Road, Sherwood



Skyring Apartments, Newstead

CONTACT DETAILS



Daniel Berry

Managing Director / Climate Resilience
Lead / Principal Engineer
1300 789 214
0400 604 556
danielberry@projexpartners.com.au

Jarrod Novosel

Principal Structural Engineer
1300 789 214
0407 774 459
jnovosel@projexpartners.com.au

Jeffrey Roulston

Director / Principal Structural Engineer
1300 789 214
0413 704 772
jeffreyloulston@projexpartners.com.au

Steve Catton

Principal Structural Engineer
1300 789 214
0422 180 977
stevecatton@projexpartners.com.au

Maroochydore

Level 1, 135 Horton Parade
Maroochydore
PO Box 219, Maroochydore QLD 4558

Cairns

14 Spence Street
Cairns
PO Box 5419, Cairns QLD 4870

Brisbane

Suite 2, Level 1
67 St Pauls Terrace
Spring Hill QLD 4000

Gold Coast

Tenancy D
Level 2, 17 Short Street
Nerang QLD 4215