



# PROJEX PARTNERS

CAPABILITY STATEMENT

Resources & Industrial



# WHO WE ARE



Projex Partners provides project management, civil and structural engineering and planning services throughout Australia, with offices on the Sunshine Coast, Brisbane, Gold Coast and Cairns.

Quality assured and client focused services are delivered by our committed team of professional engineers, project managers, technical and administrative personnel.

We seek to build long lasting relationships with our clients and the community through understanding and meeting our client's needs.

We provide services to all levels of government and the private sector across Australia.



# WHAT WE DO

Projex Partners offers consulting engineering services in:

- Industrial Subdivisions and Warehouses
- Water reservoir analysis and design
- Mine Access Facilities and Car Parks
- Storage Dams and Earthworks
- Workshops, fueling stations, wash bays, office facilities, truck park-ups and contractor yards
- Light Vehicle Roads and Haul Roads
- Accommodation Villages
- Stormwater Management
- Batter Stabilisation
- Traffic Management Plans
- Swept path analysis for light and heavy vehicles
- Utility services and relocations

Projex Partners prides itself in delivering more than you expect with our client focused service excellence. We endeavour to understand our clients' needs and will work closely with you to deliver a solution that strives for an efficient, cost-effective outcome. We operate under a third-party accredited Quality Assurance System that satisfies the requirements of ISO9001:2015. This certification demonstrates our strong commitment to providing a quality service to our clients.



Kinchant Dam



Daunia Mine Haul Road



Coolum Industrial Estate



# OUR TEAM

Projex Partners team are a group of passionate and experienced engineers, drafters and project managers. We promote a value added, best for project design approach with a focus on achieving client driven project outcomes.

We differentiate ourselves through building long lasting relationships with our clients to become their trusted advisor for engineering services and solutions.



Huon Aquaculture's Whale Point



Beenleigh Warehouse, Berrinba



22ML Tank

# PROJECT EXPERIENCE



## 22ML Tank

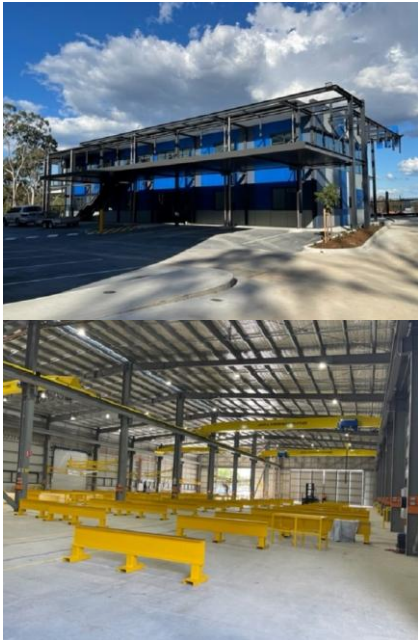
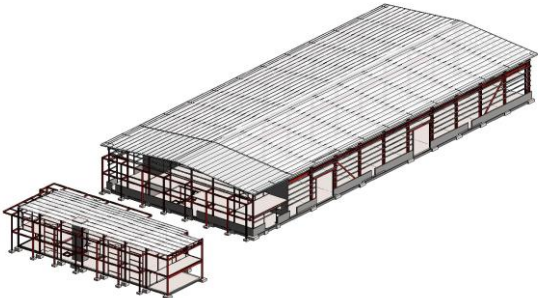
*Concept Environmental Services*



Projex Partners have provided professional engineering services to Concept Environmental Services for many years. Concept have an enviable reputation for providing quick solutions for the collection and storage of water or fluids for the mining and gas industry and more recently with potable water storage in reservoirs. The tanks are fully engineered using precast panels and post-tensioned cables to their perimeter (or within the panel in larger tanks). This 22ML tank was 94.57m in diameter and 3.0m deep and was used to collect PFAS chemically polluted water for treatment and safe release back into the environment.

## Beenleigh Steel Fabrication Factory, Berrinba

*Beenleigh Steel Fabrications*



Projex Partners' long term client Beenleigh Steel Fabrications engaged us to work closely with their architect to design the purpose built, state of the art steel fabrication factory. The main warehouse with separate office building has been designed to express the clients core business of steel fabrication and has been achieved through exposed external steel framing, raking ceilings with exposed trusses and hanging high bay lights with exposed AC feature ductwork all to keep the industrial aesthetic. Four gantry cranes (10T/20T) including a twenty tonne dolly on rails cast into the warehouse slab ensure the facility is future proofed and fit for operational purposes. Projex Partners was extremely pleased to have completed the structural and civil engineering design for the project.

# PROJECT EXPERIENCE



**Self-storage Units, 28-32 Carrick Drive, Tullamarine**

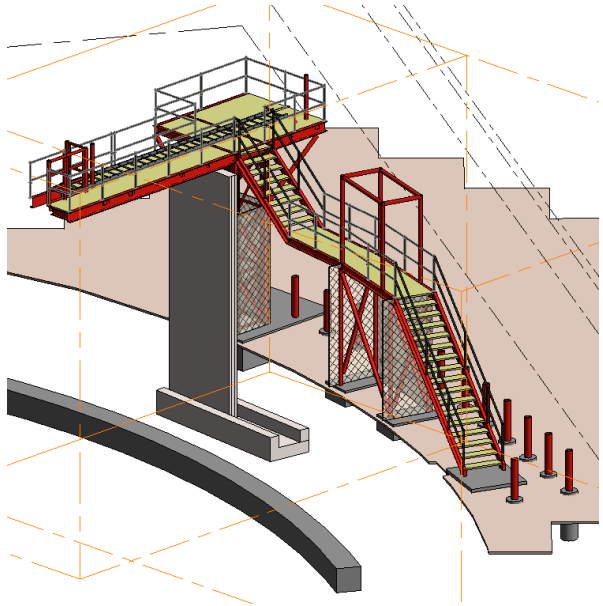
*National Storage*



The project comprised a new three level storage building within an existing National Storage site. The new building provides approximately 15,000 sq.m of new floor area for storage. Projex Partners completed the structural and civil design for the project. Working collaboratively with the wider consultant team an efficient structural solution was developed which avoided fire rating of columns as would typically apply to a Type B fire resistant structure. The project was handed over in late 2025.

**11ML Potable Water Tank Access Platform**

*Concept Environmental Services*



11.07ML Reservoir potable water tank was 5.8m high and had an internal diameter of 50.6m.

A 6.13m high structural steel platform and stairs were designed with the access platform cantilevering 4.0m into the interior of the tank for (safe) personnel access.

# PROJECT EXPERIENCE



## Dam Failure Investigations for Eureka Creek Spillway near Broadmeadow Mine

BMA



Analysis and geotechnical investigations of the rock mattresses to identify the cause of the soil loss and recommend remediation treatment options.

Our analysis concluded that the stepped gabion construction had left the underlying geofabric loose. The high turbulence flows down the spillways had gradually removed the sand subgrade and started eroding the underlying soil. Deposits of the sand subgrade were evident in the concrete stilling basin at the base of the spillway.

## Huon Aquaculture's Whale Point

Concept  
Environmental  
Solutions



Structural design services for the modular tank system used for the 20 tanks at this project. The project came into service just after Huon Aquaculture Co-Founders, Peter and Frances Bender were jointly recognised as the 2018 Australian Farmer of the Year.

This is the first Australian land-based salmon farm.

# PROJECT EXPERIENCE



Concept, Preliminary and Detailed Designs for new mine entrances for all BMA mine sites in Bowen Basin (12 Coal mines) Each mine entrance included a new Site Access Centre and electronic security access to record all personnel entering or leaving the mine. The works included new access roads, car parks, and access control/monitoring facilities including boom gates, turnstiles, swipe card readers and CCTV.



## TAMS Project - Mine Entrance Roads and Carparking

*Thiess Pty Ltd*

## Dams & Retardation Basins

*City of Greater Bendigo*



Investigation, evaluation and reporting of a Dams and retardation basin level of service review. Council's asset register has over 50 dams and retardation basins, many of which require a high level of inspection. The City engaged Projex Partners to conduct a review of the risk associated with its dams and retardation basins and report whether there was opportunity to reduce inspection intervals and costly comprehensive inspections based on evaluated risk.

# PROJECT EXPERIENCE



## 50ML Tanks

*Concept Environmental Services*



Projex Partners provided the design and documentation to Concept Environmental Services for this 50ML tank. Measuring 145.2m in diameter and 3.0m deep, the tank is used to collect and treat saline water extracted as part of the mining process for safe re-release into the aquifer. Evaporation was minimised by the use of a soft cover floating roof. The tank structure can be fully disassembled and almost all components may be reused for other locations (except for the liner and stressing cables).

## Downer EDI Contractors Yard at Daunia Coal Mine

*BMA*



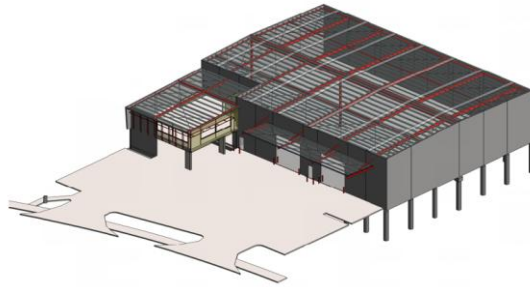
Layout development and detailed design of new contractor's yard at Daunia Coal Mine. This included the design of the following facilities: Haul truck, parking area, workshop, tyre shop, fueling station, wash bay, contractor's office/facilities, carpark, safety bands, entry and exit facilities for light and heavy vehicles and stormwater drainage management.

# PROJECT EXPERIENCE



## Offices and Warehouse at 24 Robertson Street, Brendale

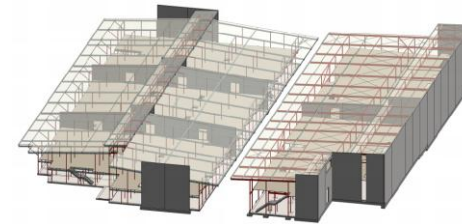
*Brenscot Builders*



Projex Partners provided the structural and civil engineering for this large industrial development, comprising 277m<sup>2</sup> front lower and upper office space and storage with a large 1387m<sup>2</sup> warehouse at the rear. The warehouse has a single central column along a 44m span with a 900 deep welded ridge beam spanning the length of the building. 530 UB rafters span from this ridge beam across to the exterior precast walls.

## Self-Storage Units, North Lakes

*Private Client*



These self-storage units comprised two large buildings. The smaller 4000m<sup>2</sup> floor space structure (incl. upper and lower floors).

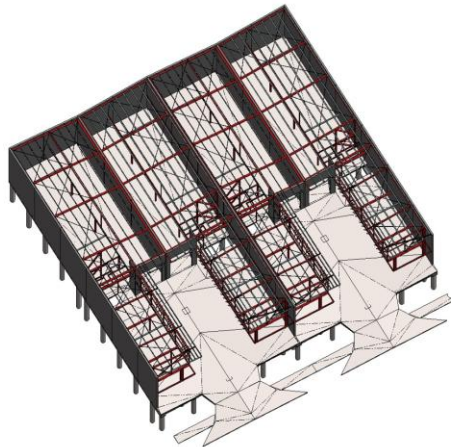
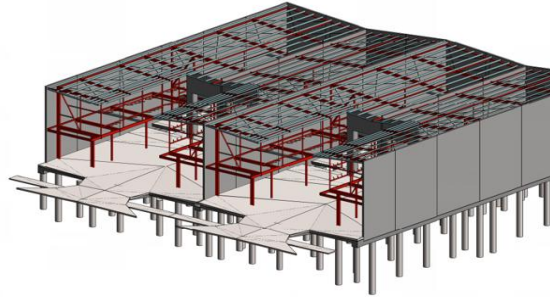
They were constructed using precast wall panels, 150 thick slabs on grade and steel framing to the first floors and roofs. The larger building was 83.5m long x 36.8m wide, providing 5850m<sup>2</sup> floor space.

# PROJECT EXPERIENCE



## Warehouses, Northgate

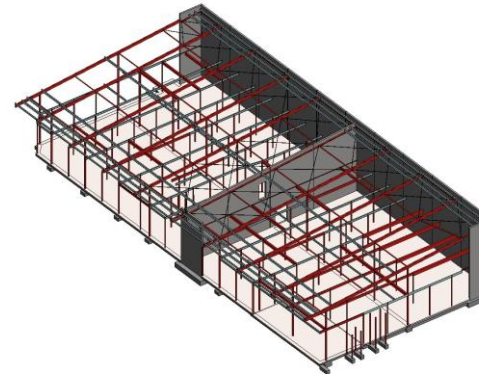
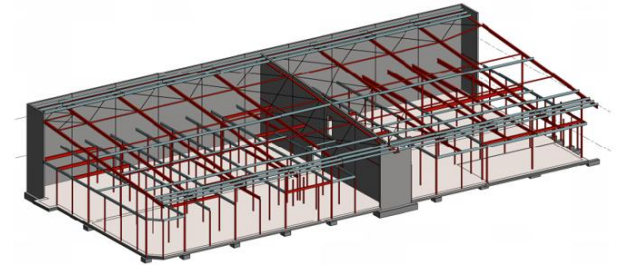
*Tobin Projects*



Projex Partners provided the structural and civil engineering for these 2 storey (1652m<sup>2</sup> GFA) warehouses comprising four separate tenancies. Precast wall panels were utilised for quick construction with steel framing to the part width mezzanine floors and roof. Foundation material required bored piers beneath ground beams under the precast walls with pile caps under steel columns supporting the mezzanine and ultimately roof structure. This building method has been a success for many of our clients.

## Noosaville Storage Shed

*Bridgmond Projects*



Many of our engineering projects rely upon a safe, efficient, swift system for industrial building construction. Precast panel walls that can be poured on site (where room permits) and quickly raised into place ensures Client cost savings compared to conventional construction methods.

These storage sheds at Noosaville are similar in engineering style many of our other industrial and warehouse developments highlighted.

# PROJECT EXPERIENCE



## Daunia Road, Moranbah

*Isaac Regional Council*



Detail survey, geotechnical investigation, roadworks and drainage design, provision of construction specification and cost estimation including bill of quantities for a 20.12km section of Daunia Rd / Annandale Road south from the Peak Downs Highway.

The project recognised the road network function within the broader transport network and therefore included a type 2 road train (53.5m in length) design vehicle within vehicle movements.

## Pasha and Eaglefield Road Upgrades, Moranbah

*Isaac Regional Council*



The project recognised the road network function within the broader transport network and therefore included a type 2 road train (53.5m in length) design vehicle within vehicle movements. The design development involved the consideration of; 3 intersections and numerous property access, incorporation and upgrading of cattle grids, road pavement design, foundation widening, channelization upgrades, road geometry, signage improvements, culvert and floodway development and the consideration of existing services and relocation capabilities.

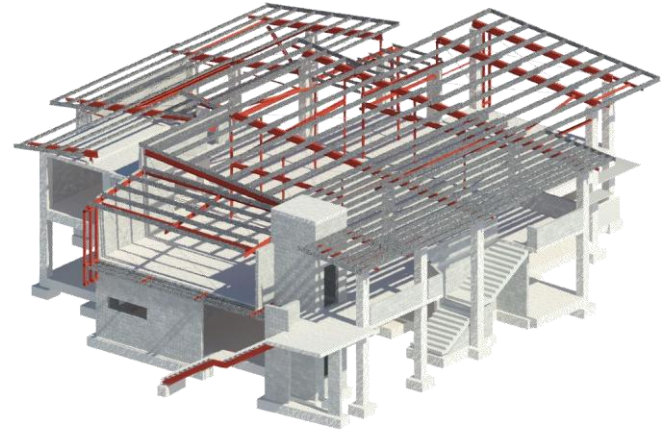


# STRUCTURAL MODELLING CAPABILITY

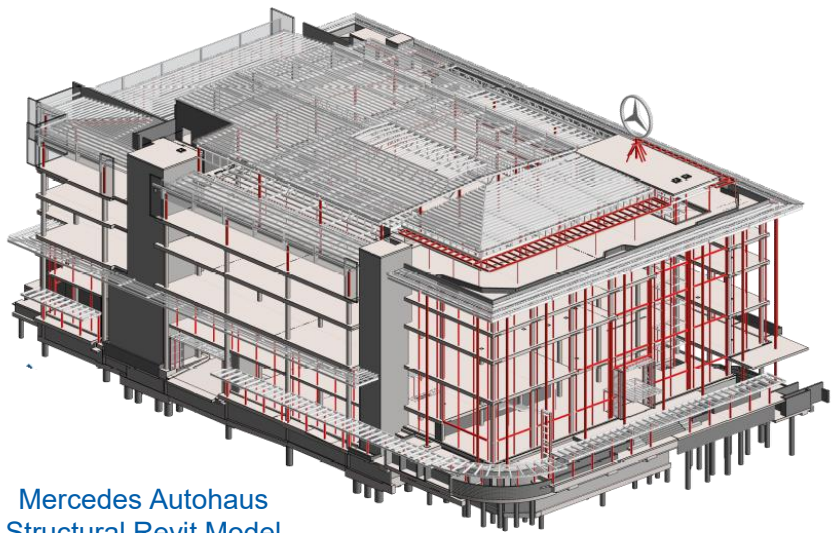
Projex Partners uses Autodesk BIM tools for authoring and collaboration and embraces openBIM. Our experienced team produces high quality models and can accommodate your specific project requirements.



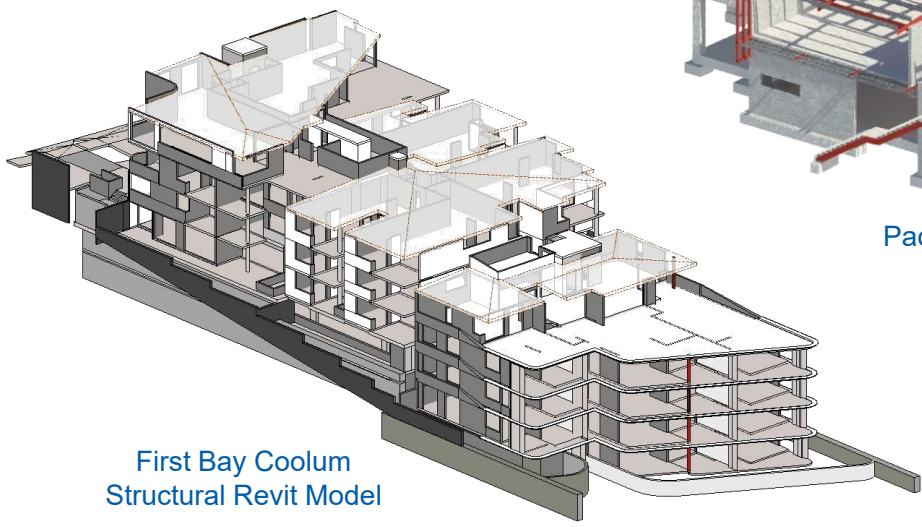
Market Lane Residences  
Structural Revit Model



Pacific Lutheran College – Stage 9  
Structural Revit Model



Mercedes Autohaus  
Structural Revit Model



First Bay Coolum  
Structural Revit Model



Photo: Patrick Tigges



# CONTACT DETAILS



## Daniel Berry

Managing Director / Climate Resilience  
Lead / Principal Engineer  
1300 789 214  
0400 604 556  
[danielberry@projexpartners.com.au](mailto:danielberry@projexpartners.com.au)

## Mark Atkinson

Principal Municipal Engineer  
1300 789 214  
0409 732 787  
[markatkinson@projexpartners.com.au](mailto:markatkinson@projexpartners.com.au)

## Jeffrey Roulston

Director / Principal Structural Engineer  
1300 789 214  
0413 704 772  
[jeffreyloulston@projexpartners.com.au](mailto:jeffreyloulston@projexpartners.com.au)

## Kai Pelgrave

Principal Designer  
1300 789 214  
0411 457 252  
[kaipelgrave@projexpartners.com.au](mailto:kaipelgrave@projexpartners.com.au)

## Maroochydore

Level 1, 135 Horton Parade  
Maroochydore  
PO Box 219, Maroochydore QLD 4558

## Cairns

14 Spence Street  
Cairns  
PO Box 5419, Cairns QLD 4870

## Brisbane

Suite 2, Level 1  
67 St Pauls Terrace  
Spring Hill QLD 4000

## Gold Coast

Tenancy D  
Level 2, 17 Short Street  
Nerang QLD 4215