



# PROJEX PARTNERS

## CAPABILITY STATEMENT

**ProjexPartners**

PROJECT MANAGEMENT | ENGINEERING | PLANNING

Building community through our people





## WHO WE ARE



Projex Partners provides project management, civil and structural engineering and planning services throughout Australia, with offices on the Sunshine Coast, Brisbane, Gold Coast and Cairns.

Quality assured and client focused services are delivered by our committed team of professional engineers, project managers, technical and administrative personnel.

We seek to build long lasting relationships with our clients and the community through understanding and meeting our client's needs.

We provide services to all levels of government and the private sector across Australia.



# WHAT WE DO

Projex Partners provides project management, civil and structural engineering and planning services across Australia including:

- Structural Engineering
- Traffic and Transportation
- Roads and Highways
- Coastal Engineering
- Urban Development
- Hydrology and Drainage
- Project Management
- Municipal Engineering
- Precast Engineering and Design
- Climate Resilience and Adaptation
- Structural and Civil Peer Reviews
- Sustainable Transport
- Water Reticulation & Sewer
- Waste
- Parks and Sporting Facilities
- Resources

Projex Partners prides itself in delivering more than you expect with our client focused service excellence. We endeavour to understand our clients' needs and will work closely with you to deliver a solution that strives for an efficient, cost-effective outcome. We operate under a third-party accredited Quality Assurance System that satisfies the requirements of ISO9001:2015. This certification demonstrates our strong commitment to providing a quality service to our clients.



Newstead Series, Newstead



Port Stewart Road Landslip Repair



Coolum Industrial Estate



# OUR TEAM

Projex Partners team are a group of passionate and experienced engineers, drafters and project managers. We promote a value added, best for project design approach with a focus on achieving client driven project outcomes.

We differentiate ourselves through building long lasting relationships with our clients to become their trusted advisor for engineering services and solutions.



# PROJECT EXPERIENCE



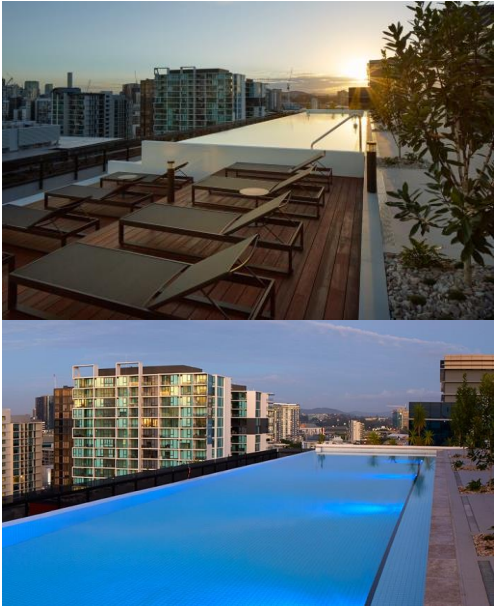
**Mercedes Benz  
Autohaus, Newstead**  
*John Holland Group*



The project includes new car showrooms, sales and service areas, museum and other commercial tenancies over five levels adjacent to Breakfast Creek in Newstead. The building is equivalent to 10 storeys in height and is approximately 100m by 60m wide.

Projex Partners provided full structural design services including structural steelwork, precast, pre-tensioned, post-tensioned and conventional reinforced concrete elements.

**Gasworks Residences,  
New Farm**  
*Tom Dooley  
Developments*



Structural design for a 16 storey mixed use development over 4 basements bounded by existing buildings and heritage structures in difficult ground conditions.

Projex Partners worked closely with the piling contractor to develop a strutted diaphragm wall retention system which enabled the basement excavation to occur without damage to adjacent structures.

*Photos by Stefan Jannides  
Photography*

# PROJECT EXPERIENCE



**Robert Road & Bicentennial Drive, Cairns**  
*Cairns Regional Council*

---



Intersection upgrade and traffic signal installation at the Robert Road / Bicentennial Drive. The intersection upgrade minimised land resumption requirements and otherwise expensive relocation of existing underground fibre optic communication infrastructure. The project also accommodated public transport (bus stop) and cycle lanes.

**Old Gympie Road, Dakabin**  
*Moreton Bay Regional Council*

---



Widening of 700m section of the road corridor to a 4-lane median divided carriageway, signalling the intersections at Hughes Road East / Dakabin Waste Facility access and Goodwin Rd / Watson Park.

# PROJECT EXPERIENCE



**Kilkivan Equestrian Centre**  
*Gympie Regional Council*



Assisting Council with the preparation of a reference design and specifications for the D&C contract associated with a 3200m<sup>2</sup> equestrian centre. Projex Partners also provided contract administration services to Council.

**Bribie Island Recreation Reserve Netball Courts**  
*Moreton Bay Regional Council*



Engineering services for the reconstruction of three existing lit netball courts, construction of a new clubhouse, construction of compliant pathways, construction of a rebound training wall and a construction of a boundary fence. The project included geotechnical design, services design and lighting design.

# PROJECT EXPERIENCE



## 50ML Tanks

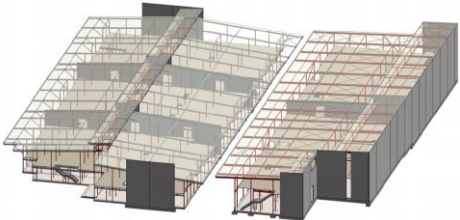
*Concept Environmental Services*



Projex Partners provided the design and documentation to Concept Environmental Services for this 50ML tank. Measuring 145.2m in diameter and 3.0m deep, the tank is used to collect and treat saline water extracted as part of the mining process for safe re-release into the aquifer. Evaporation was minimised by the use of a soft cover floating roof. The tank structure can be fully disassembled and almost all components may be reused for other locations (except for the liner and stressing cables).

## Self-Storage Units, North Lakes

*Private Client*



These self-storage units comprised two large buildings. The smaller 4000m<sup>2</sup> floor space structure (incl. upper and lower floors).

They were constructed using precast wall panels, 150 thick slabs on grade and steel framing to the first floors and roofs. The larger building was 83.5m long x 36.8m wide, providing 5850m<sup>2</sup> floor space.



# PROJECT EXPERIENCE



## Huon Aquaculture's Whale Point

*Concept  
Environmental  
Solutions*



Structural design services for the modular tank system used for the 20 tanks at this project. The project came into service just after Huon Aquaculture Co-Founders, Peter and Frances Bender were jointly recognised as the 2018 Australian Farmer of the Year.

This is the first Australian land-based salmon farm.

## Downer EDI Contractors Yard at Daunia Coal Mine

*BMA*



Layout development and detailed design of new contractor's yard at Daunia Coal Mine. This included the design of the following facilities: Haul truck, parking area, workshop, tyre shop, fueling station, wash bay, contractor's office/facilities, carpark, safety bands, entry and exit facilities for light and heavy vehicles and stormwater drainage management.

# PROJECT EXPERIENCE



## Dams & Retardation Basins

*City of Greater Bendigo*



Investigation, evaluation and reporting of a Dams and retardation basin level of service review. Council's asset register has over 50 dams and retardation basins, many of which require a high level of inspection. The City engaged Projex Partners to conduct a review of the risk associated with its dams and retardation basins and report whether there was opportunity to reduce inspection intervals and costly comprehensive inspections based on evaluated risk.

## Fitzroy Boat Ramps

*Department of Transport and Main Roads*



Detailed design works and TIC tender preparation and Contract Administration Services for the following four Boat Ramp projects in Fitzroy District:

- Ski Gardens
- Mulambin
- Glebe Weir
- Callaghan Park, Rockhampton
- Stanage Bay.

A key outcome is the integration of Rockhampton Regional Council works into the contract for delivery at Callaghan Park and includes a new significant carpark and a fishing platform.

# PROJECT EXPERIENCE



## Peak Downs Highway (33b) Eton Range Road Safety Audit

Department of Transport and Main Roads



Post Construction Road Safety Audit and User Safety Assessment of the Peak Downs Highway (33b) Eton Range Realignment chainage 49.42km to 54.09km.

## Pasha and Eaglefield Road Upgrades, Moranbah

Isaac Regional Council



The project recognised the road network function within the broader transport network and therefore included a type 2 road train (53.5m in length) design vehicle within vehicle movements. The design development involved the consideration of; 3 intersections and numerous property access, incorporation and upgrading of cattle grids, road pavement design, foundation widening, channelization upgrades, road geometry, signage improvements, culvert and floodway development and the consideration of existing services and relocation capabilities.

# PROJECT EXPERIENCE



## Samford Road Ferny Hills Cycle and Pedestrian pathway bridge

Moreton Bay Regional Council



Structural design and documentation of the Samford Road Ferny Hills Cycle and Pedestrian pathway bridge. The design required a 100m long suspended pathway for cyclists and pedestrians constructed over an existing embankment. Foundations comprised 2.8m deep reinforced concrete bored piers supporting steel posts under cantilevered steel floor beams which in turn support the boardwalk/deck over.

## Wises Road Gymnastics and Beerwah Sports Carparks

Sunshine Coast Council



This project involved the design and construction cost estimate of an on-road and off-road car parking facility. These designs were in accordance with AS 2890.

Both projects included road design, pavement design, drainage considerations and minor earthworks design. 12D modelling of earthworks required for both sites included an open stormwater drain.

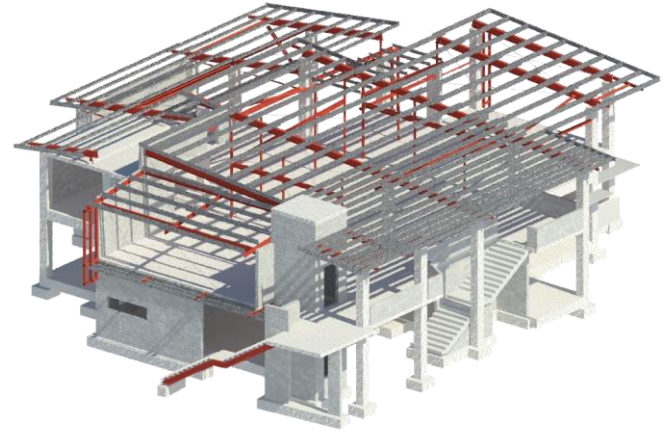


# STRUCTURAL MODELLING CAPABILITY

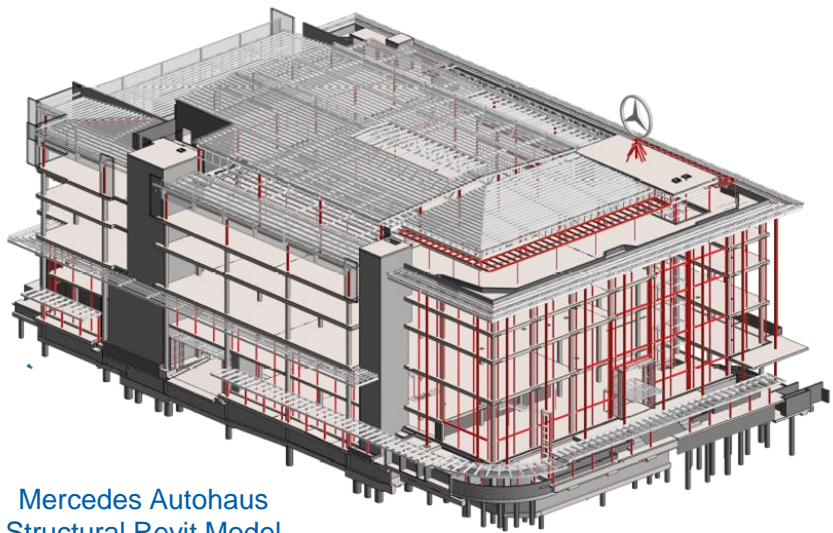
Projex Partners uses Autodesk BIM tools for authoring and collaboration and embraces openBIM. Our experienced team produces high quality models and can accommodate your specific project requirements.



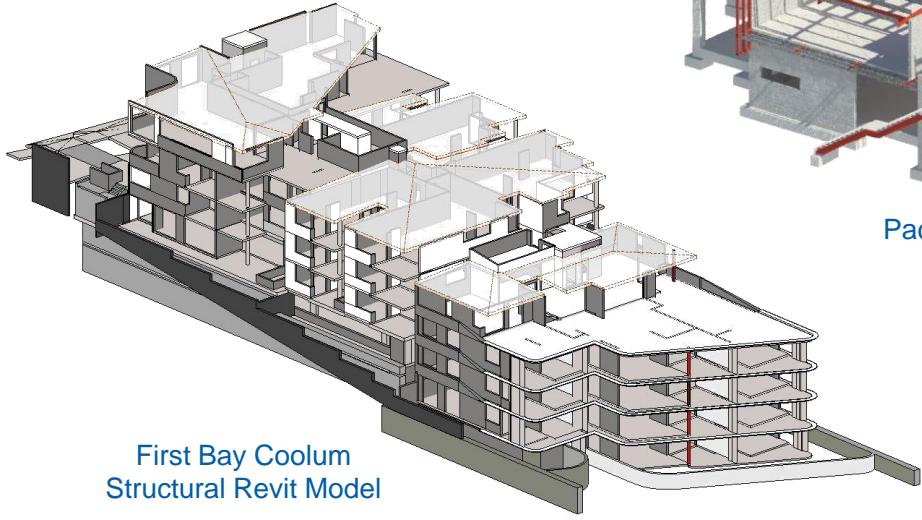
Market Lane Residences  
Structural Revit Model



Pacific Lutheran College – Stage 9  
Structural Revit Model



Mercedes Autohaus  
Structural Revit Model



First Bay Cooloom  
Structural Revit Model



Ciel Apartments, New Farm



Mary Valley Rattler Restoration



Callaghan Park Boat Ramp Carpark

# CONTACT DETAILS



## Daniel Berry

Managing Director / Climate Resilience  
Lead / Principal Engineer  
1300 789 214  
0400 604 556  
[danielberry@projexpartners.com.au](mailto:danielberry@projexpartners.com.au)

## Mark Atkinson

Principal Municipal Engineer  
1300 789 214  
0409 732 787  
[markatkinson@projexpartners.com.au](mailto:markatkinson@projexpartners.com.au)

## Jeffrey Roulston

Director / Principal Structural Engineer  
1300 789 214  
0413 704 772  
[jeffreyloulston@projexpartners.com.au](mailto:jeffreyloulston@projexpartners.com.au)

## Maroochydore

Level 1, 135 Horton Parade  
Maroochydore  
PO Box 219, Maroochydore QLD 4558

## Cairns

14 Spence Street  
Cairns  
PO Box 5419, Cairns QLD 4870

## Brisbane

Suite 2, Level 1  
67 St Pauls Terrace  
Spring Hill QLD 4000

## Gold Coast

45 Nerang Street  
Southport  
PO Box 1300, Southport QLD 4215