



PROJEX PARTNERS

CAPABILITY STATEMENT

Marine & Coastal Infrastructure

ProjexPartners

PROJECT MANAGEMENT | ENGINEERING | PLANNING

Building community through our people





WHO WE ARE



Projex Partners provides project management, civil and structural engineering and planning services throughout Australia, with offices on the Sunshine Coast, Brisbane, Gold Coast and Cairns.

Quality assured and client focused services are delivered by our committed team of professional engineers, project managers, technical and administrative personnel.

We seek to build long lasting relationships with our clients and the community through understanding and meeting our client's needs.

We provide services to all levels of government and the private sector across Australia.



WHAT WE DO

Projex Partners offers consulting engineering services for the following areas of coastal infrastructure:

- Marinas
- Jetties
- Floating walkways
- Sand Replenishment
- Asset life assessment
- Boat Ramps
- Dredging Pipelines including Submarine
- Dune Stabilisation
- Revetment Walls/Sea Walls

Projex Partners prides itself in delivering more than you expect with our client focused service excellence. We endeavour to understand our clients' needs and will work closely with you to deliver a solution that strives for an efficient, cost-effective outcome. We operate under a third-party accredited Quality Assurance System that satisfies the requirements of ISO9001:2015. This certification demonstrates our strong commitment to providing a quality service to our clients.



WWW.JAS-ANZ.ORG/REGISTER



Mooloolaba Sandbag Wall – Stage 2



Bindaree Terrace Revetment Wall



Callaghan Boat Ramp Carpark



OUR TEAM

Projex Partners team are a group of passionate and experienced engineers, drafters and project managers. We promote a value added, best for project design approach with a focus on achieving client driven project outcomes.

We differentiate ourselves through building long lasting relationships with our clients to become their trusted advisor for engineering services and solutions.



PROJECT EXPERIENCE



Midge Point Boat Ramp

Transport and Main Roads



Midge Point boat ramp included the design of a boat ramp and causeway north of Mackay. The causeway and ramp are located within tidal land and the Great Barrier Reef Marine Park which required the location to be positioned to minimise impact on marine plants and fish passage while minimising the footprint of works in an exposed coastal location.

Dump Ezy, Cooloolool National Park

Future Plus Environmental



Dump Ezy provides campers within the Cooloolool National Park a clean user-friendly discharge point for portable toilets. Projex Partners alongside Future Plus Environmental provided the design and contract administration for the project. The facility includes underground sewer holding tanks, elevated water tank, solar powered water pump and high water alarm system. Site accessibility, very poor ground conditions and ongoing wet weather were some of the challenges overcome during the delivery of the project for Queensland Parks and Wildlife Services.

PROJECT EXPERIENCE



Southern Moreton Bay Islands (Value Engineering)

Transport and Main Roads



Independent review including identifying and quantifying cost savings for the consideration of the project team. This included providing cost effective alternative options for various components of the terminal structures in order to reduce the overall cost and reduce fabrication timeframes.

Pelican Waters Marina

The Jetty Specialists



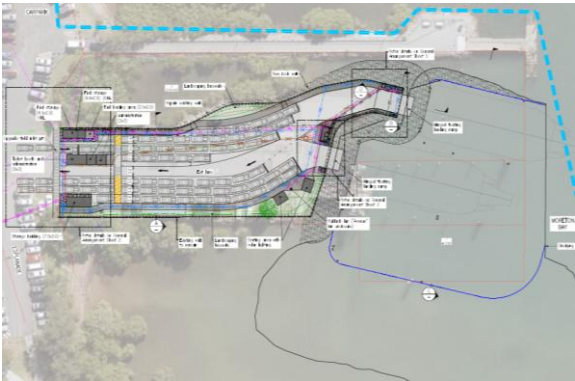
Projex Partners provided structural engineering services for the proposed Pelican Waters Marina which comprises four berthing arms, a visitor vessel berthing arm, boardwalks with access gangways and a boat lift jetty. Projex designed the floating pontoons (approximately 50 modules) which consist of a concrete deck within an extruded aluminium frame cast onto a polystyrene flotation block encased in a HDPE liner.

PROJECT EXPERIENCE



Projex Partners was engaged for the design and documentation of the proposed redevelopment of the Redland Vehicular Ferry Terminal.

The design includes 3 new barge berths, 2 barge ramps and associated stormwater, earthworks, protection works, electrical, water and sewer connections and associated applications to EDQ and Redland City Council.



Redland Bay Vehicle Ferry Terminal

Pensar Structures Pty Ltd

Yorkeys Knob Floating Walkway

The Jetty Specialists



Structural analysis and design of pontoons, pile brackets, piles, mooring cleats, bollards, barrier around piles, solar light fixings and abutment.

PROJECT EXPERIENCE



Casuarina Boat Ramp and Trailer Park

Transport and Main Roads



Projex Partners was engaged by Transport and Main Roads for the detailed design of a boat ramp, car trailer park and access road for a new boat ramp on Casuarina Creek, Port Alma. The work also included geotechnical design and environmental assessment.

Cod Hole Boat Ramp Revetment Wall

Local Government



Projex Partners undertook the design and documentation for the Cod Hole Boat Ramp car park upgrade, located on Bradman Avenue, providing access to the Maroochy River. This project delivered a design to widen the boat ramp car park to accommodate a rigging bay, improve traffic circulation and alleviate bank erosion. The project included design of a rock revetment wall within a constrained project footprint, a piers slab arrangement to protect Unitywater submarine pipelines, relocation of a cathodic protection test point, new pavement and pavement reconstruction and a stormwater pipe extension.

PROJECT EXPERIENCE



**Mooloolaba Foredune
Stabilisation Geowall &
Sand Replenishment
Pipeline**

Sunshine Coast Council



Planning design and approvals for the beach replenishment program infrastructure at Mooloolaba and extension of the sandbag wall at the Mooloolaba Spit toward the Mooloolah.

The project has been developed to provide a sustainable shoreline protection whilst minimising long-term environmental impact. The sandbag system chosen balances the environmental impacts with engineering requirements.

**Eversleigh Road,
Scarborough
Embankment Stabilisation**

*Moreton Bay Regional
Council*



Projex Partners was engaged by Moreton Bay Regional Council to undertake a site investigation, geotechnical investigation and slope stability assessment of the existing embankment for the removal of a large tree at the eastern end of Eversleigh Road, Scarborough.

Projex Partners worked with Council to solve the slope stability issues and improve the usability of the site through the construction of a retaining wall and landscaping.

PROJECT EXPERIENCE



Bindaree Terrace (Mayes Canal) Revetment Wall, Mooloolaba

Sunshine Coast Council



Projex Partners was engaged by Sunshine Coast Council to undertake the design and approvals of a new replacement wall on a bend of Mayes Canal, Mooloolaba at the bend of Bindaree Terrace, where ongoing erosion was occurring.

Fitzroy Boat Ramps

*Department of Transport
and Main Roads*



Detailed design works and TIC tender preparation and Contract Administration Services for the following four Boat Ramp projects in Fitzroy District:

- Ski Gardens
- Mulambin
- Glebe Weir
- Callaghan Park, Rockhampton
- Stanage Bay.

A key outcome is the integration of Rockhampton Regional Council works into the contract for delivery at Callaghan Park and includes a new significant carpark and a fishing platform.



Photo: Patrick Tigges



CONTACT DETAILS



Daniel Berry

Managing Director / Climate Resilience
Lead / Principal Engineer
1300 789 214
0400 604 556
danielberry@projexpartners.com.au

Mark Atkinson

Principal Municipal Engineer
1300 789 214
0409 732 787
markatkinson@projexpartners.com.au

Jeffrey Roulston

Director / Principal Structural Engineer
1300 789 214
0413 704 772
jeffreyloulston@projexpartners.com.au

Steve Catton

Principal Structural Engineer
1300 789 214
0422 180 977
stevecatton@projexpartners.com.au

Maroochydore

Level 1, 135 Horton Parade
Maroochydore
PO Box 219, Maroochydore QLD 4558

Cairns

14 Spence Street
Cairns
PO Box 5419, Cairns QLD 4870

Brisbane

Suite 2, Level 1
67 St Pauls Terrace
Spring Hill QLD 4000

Gold Coast

Tenancy D
Level 2, 17 Short Street
Nerang QLD 4215