



PROJEX PARTNERS

CAPABILITY STATEMENT

Municipal Engineering

ProjexPartners

PROJECT MANAGEMENT | ENGINEERING | PLANNING

Building community through our people





WHO WE ARE



Projex Partners provides project management, civil and structural engineering and planning services throughout Australia, with offices on the Sunshine Coast, Brisbane, Gold Coast and Cairns.

Quality assured and client focused services are delivered by our committed team of professional engineers, project managers, technical and administrative personnel.

We seek to build long lasting relationships with our clients and the community through understanding and meeting our client's needs.

We provide services to all levels of government and the private sector across Australia.



WHAT WE DO

Projex Partners offers consulting engineering services in:

- Urban Development Planning and Design
- Municipal Engineering
- Project Management
- Hydrology and Drainage Planning and Design
- Water Reticulation and Sewer Planning and Design
- Environment
- Coastal Engineering
- Resources
- Town Planning
- Road and Highways Planning and Design
- Traffic and Transportation
- Parks and Sporting Facilities
- Sustainable Transport
- Peer Reviews
- Waste

Projex Partners prides itself in delivering more than you expect with our client focused service excellence. We endeavour to understand our clients' needs and will work closely with you to deliver a solution that strives for an efficient, cost-effective outcome. We operate under a third-party accredited Quality Assurance System that satisfies the requirements of ISO 9001:2015. This certification demonstrates our strong commitment to providing a quality service to our clients.





OUR TEAM

Projex Partners team are a group of passionate and experienced engineers, drafters and project managers. We promote a value added, best for project design approach with a focus on achieving client driven project outcomes.

We differentiate ourselves through building long lasting relationships with our clients to become their trusted advisor for engineering services and solutions.





MUNICIPAL ENGINEERING

PLANNING AND DESIGN

Projex Partners offers consulting engineering services in:

- Roads and Highways Planning and Design
- Hydrology and Hydraulics Planning and Design
- Water and Sewer Planning and Design
- Coastal Engineering
- Active Transport Networks and Infrastructure
- Traffic and Transportation planning and design
- Parks and Sporting Facilities
- Services planning and design
- Telecommunications and electrical coordination



Bindaree Terrace Revetment Wall



Victory Park, Woombye



Emerald Court, Mapleton – Surface and Subsurface Drainage Design

PROJECT EXPERIENCE



**Materials
Recovery Facility,
Nambour**

*Sunshine Coast
Council*



Projex Partners were engaged by Sunshine Council Coast to prepare detailed design and contract documentation for the civil works for a new Material Recovery Facility (MRF) Site at Cooney Road, Nambour. The commission also included construction phase support and certification.

**Cod Hole Boat Ramp
Revetment Wall**

Local Government



Projex Partners undertook the design and documentation for the Cod Hole Boat Ramp car park upgrade, located on Bradman Avenue, providing access to the Maroochy River. This project delivered a design to widen the boat ramp car park to accommodate a rigging bay, improve traffic circulation and alleviate bank erosion. The project included design of a rock revetment wall within a constrained project footprint, a pierced slab arrangement to protect Unitywater submarine pipelines, relocation of a cathodic protection test point, new pavement and pavement reconstruction and a stormwater pipe extension.

PROJECT EXPERIENCE



Harris Avenue Sports Complex, Narangba

City of Moreton Bay



Projex Partners were engaged to prepare a concept plan, preliminary and detailed designs of 6 tennis courts, clubhouse and carpark. The design included earthworks, pavement and stormwater designs as well as all services associated with the clubhouse. The tennis courts and associated lighting and fencing were also part of the design.

Proserpine Waterpark

Whitsunday Regional Council



Design of a new waterpark, carpark and landscaping alongside the existing Proserpine swimming pool. The design allows for separated access from the swimming pool, as requested by the client to allow the public and tourists to use the waterpark. All civil engineering works were designed in-house by Projex Partners. Hydraulic engineering and landscaping were designed by subconsultants and coordinated by Projex Partners.

PROJECT EXPERIENCE



Robert Road & Bicentennial Drive, Cairns

Cairns Regional Council



Intersection upgrade and traffic signal installation at the Robert Road / Bicentennial Drive. The intersection upgrade minimised land resumption requirements and otherwise expensive relocation of existing underground fibre optic communication infrastructure. The project also accommodated public transport (bus stop) and cycle lanes.

Old Gympie Road, Dakabin

City of Moreton Bay



Widening of 700m section of the road corridor to a 4-lane median divided carriageway, signalling the intersections at Hughes Road East / Dakabin Waste Facility access and Goodwin Rd / Watson Park.

PROJECT EXPERIENCE



**Daunia Road,
Moranbah**
Isaac Regional Council



Detail survey, geotechnical investigation, roadworks and drainage design, provision of construction specification and cost estimation including bill of quantities for a 20.12km section of Daunia Rd / Annandale Road south from the Peak Downs Highway.

The project recognised the road network function within the broader transport network and therefore included a type 2 road train (53.5m in length) design vehicle within vehicle movements.

**Pasha and Eaglefield
Road Upgrades,
Moranbah**
Isaac Regional Council

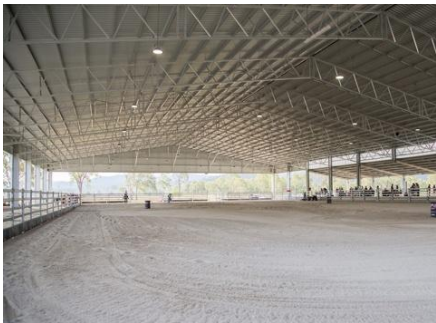


The project recognised the road network function within the broader transport network and therefore included a type 2 road train (53.5m in length) design vehicle within vehicle movements. The design development involved the consideration of; 3 intersections and numerous property access, incorporation and upgrading of cattle grids, road pavement design, foundation widening, channelization upgrades, road geometry, signage improvements, culvert and floodway development and the consideration of existing services and relocation capabilities.

PROJECT EXPERIENCE



Kilkivan Equestrian Centre
Gympie Regional Council



Assisting Council with the preparation of a reference design and specifications for the D&C contract associated with a 3200m² equestrian centre. Projex Partners also provided contract administration services to Council.

Bribie Island Recreation Reserve Netball Courts
City of Moreton Bay



Engineering services for the reconstruction of three existing lit netball courts, construction of a new clubhouse, construction of compliant pathways, construction of a rebound training wall and a construction of a boundary fence. The project included geotechnical design, services design and lighting design.

PROJECT EXPERIENCE



Dorothy Anderson Park, Warana – Amenities Building

Sunshine Coast Council



Projex Partners were commissioned by Sunshine Coast Council to provide detailed civil and structural design, approvals and documentation to facilitate construction of a new public amenities building at Dorothy Anderson Park, Wurtulla, as the existing public amenities building at the site had reached the end of its service life.

A new building complying with CPTED principles was provided with one PWD cubicle, one unisex ambulant cubicle and handbasins. A new DDA compliant pathway was also provided for access to the new building. The site is located amongst sensitive coastal dunal vegetation and as such the design sought to minimise the works footprint as far as possible.

Projex Partners were engaged by Gympie Regional Council to undertake the design of two floodways that required replacement due to their deteriorating conditions. The floodways were located within mapped waterways and an ecological sensitive area which required SARA approval before works could commence. Potential impacts upon vegetation and fish passage were key considerations throughout the design process.



Thornside Road Floodways

*Gympie Regional
Council*

PROJECT EXPERIENCE



**Samford Road
Ferry Hills Cycle
and Pedestrian
pathway bridge**

*Moreton Bay Regional
Council*



Structural design and documentation of the Samford Road Ferry Hills Cycle and Pedestrian pathway bridge. The design required a 100m long suspended pathway for cyclists and pedestrians constructed over an existing embankment. Foundations comprised 2.8m deep reinforced concrete bored piers supporting steel posts under cantilevered steel floor beams which in turn support the boardwalk/deck over.

**Wises Road
Gymnastics and
Beerwah Sports
Carparks**

Sunshine Coast Council



This project involved the design and construction cost estimate of an on-road and off-road car parking facility. These designs were in accordance with AS 2890. Both projects included road design, pavement design, drainage considerations and minor earthworks design. 12D modelling of earthworks required for both sites included an open stormwater drain.

PROJECT EXPERIENCE



Dams & Retardation Basins

City of Greater Bendigo



Investigation, evaluation and reporting of a Dams and retardation basin level of service review. Council's asset register has over 50 dams and retardation basins, many of which require a high level of inspection. The City engaged Projex Partners to conduct a review of the risk associated with its dams and retardation basins and report whether there was opportunity to reduce inspection intervals and costly comprehensive inspections based on evaluated risk.

Eversleigh Road, Scarborough Embankment Stabilisation

City of Moreton Bay



Projex Partners was engaged by Moreton Bay Regional Council to undertake a site investigation, geotechnical investigation and slope stability assessment of the existing embankment for the removal of a large tree at the eastern end of Eversleigh Road, Scarborough.

Projex Partners worked with Council to solve the slope stability issues and improve the usability of the site through the construction of a retaining wall and landscaping.

PROJECT EXPERIENCE



South Pine Road and Plucks Road, Arana Hills – Intersection Upgrade

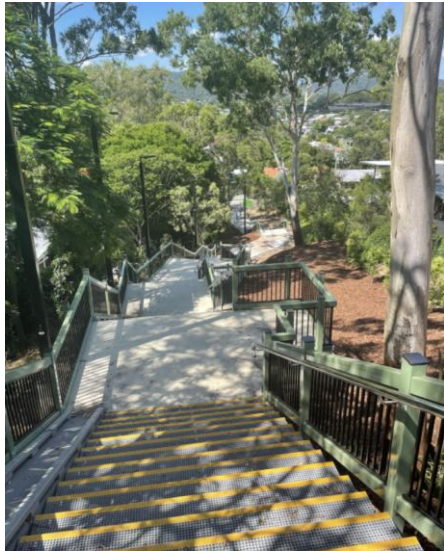
City of Moreton Bay



Projex Partners were engaged to design and document the intersection priority change at Arana Hills. The upgrade of South Pine Road/Plucks Road intersection has provided improved road capacity and intersection performance, enhanced road safety, enhanced immunity from storm-water inundation, and improved amenity and appearance of the road corridor.

Max Morton Staircase, Arana Hills

City of Moreton Bay



Projex Partners designed a pathway connection between Plucks Road to Minto Crescent, Arana Hills. The project provides an improved connectivity for pedestrians and cyclists heading north and south, and to provide a safer alternative to Dawson Parade for cyclists.

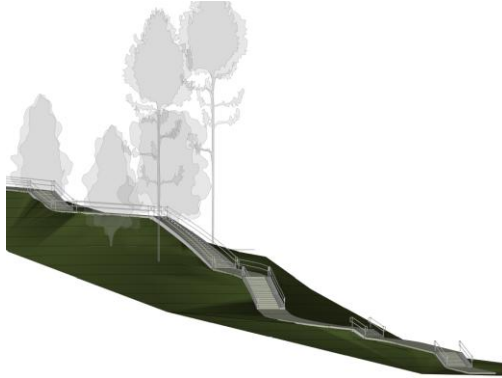
The stairs and pathway included a cycle ‘push’ ramp, pathway landings, improvements to affected residential driveways, LED lighting and concrete sleeper retaining walls.

PROJECT EXPERIENCE



Arana Hills - Plucks Road/Minto Crescent - Pathway

Moreton Bay Regional Council



Detailed design and documentation for a new 110m suspended walkway, including 5 stair flights due to the steep site topography (20m level difference). The pathway is required to cater for both pedestrians and cyclists through the use of ramped wheel tracks.

Mango Hill - Halpine Lake - Pathway and Pedestrian Bridge

Moreton Bay Regional Council



Design and documentation of approximately 400m of connection pathway between Mango Hill Station and Jasper Place, Mango Hill. The connection included a prefabricated pedestrian/cycle bridge that provides passage across existing drainage culverts adjacent to the Jasper Place pedestrian underpass. The bridge is approx. 17m span by 3m wide, with barriers designed for pedestrian and cyclists in accordance with AS5100.

PROJECT EXPERIENCE



**Mooloolaba Foredune
Stabilisation Geowall &
Sand Replenishment
Pipeline**

*Moreton Bay Regional
Council*



Planning design and approvals for the beach replenishment program infrastructure at Mooloolaba and extension of the sandbag wall at the Mooloolaba Spit toward the Mooloolah.

The project has been developed to provide a sustainable shoreline protection whilst minimising long-term environmental impact. The sandbag system chosen balances the environmental impacts with engineering requirements

**Maroochydore Central
Precinct – Initial
Intersection Design**

Sunshine Coast Council



Principal Consultant for the planning and design (including preparation and evaluation of options) for new intersections accessing the planned Maroochydore City Centre Priority Development area (\$30M). Input has included design associated with 2 major urban intersections on Maud Street, Maroochydore including design of roadway lighting and traffic signals and coordination of specialist sub-consultants for traffic modelling.



Mango Hill - Halpine Lake - Pathway and Pedestrian Bridge



Port Stewart Road Landslip Repair



Mary Valley Rattler

CONTACT DETAILS



Mark Atkinson

Principal Municipal Engineer

1300 789 214

0409 732 787

markatkinson@projexpartners.com.au

Jeffrey Roulston

Director / Principal Structural Engineer

1300 789 214

0413 704 772

jeffreyloulston@projexpartners.com.au

Carl Billingham

Principal Engineer

1300 789 214

0406 878 406

carlbillingham@projexpartners.com.au

Kai Pelgrave

Principal Civil Designer

1300 789 214

0411 457 252

kaipelgrave@projexpartners.com.au

Maroochydore

Level 1, 135 Horton Parade

Maroochydore

PO Box 219, Maroochydore QLD 4558

Brisbane

Suite 2, Level 1

67 St Pauls Terrace

Spring Hill QLD 4000

Cairns

14 Spence Street

Cairns

PO Box 5419, Cairns QLD 4870

Gold Coast

Tenancy D

Level 2, 17 Short Street

Nerang QLD 4215